



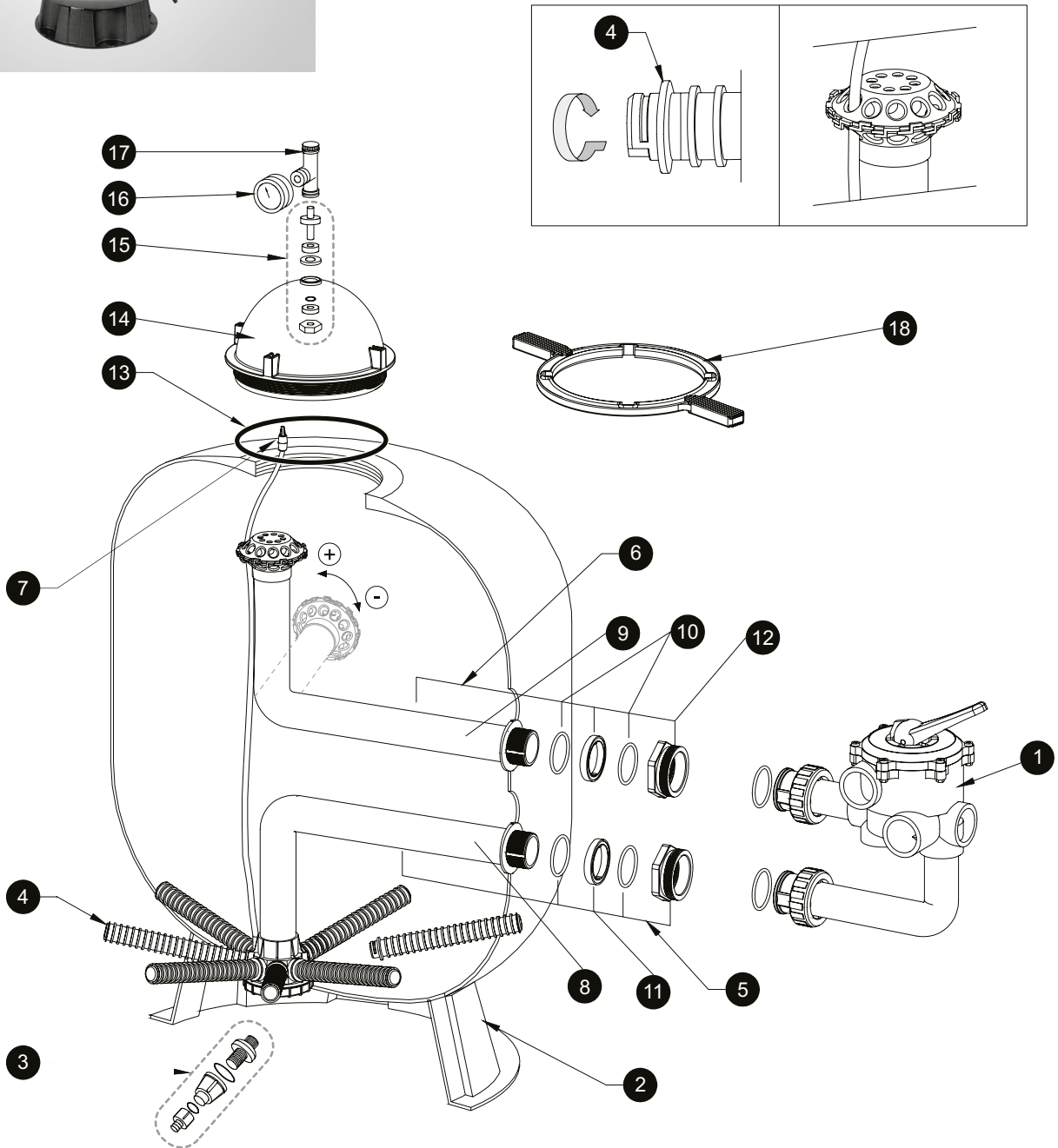
# FIBERGLASS SAND FILTER FOR DOMESTIC POOLS, TRITON I / TRITON II SERIES

**PENTAIR**



### MODELS

- TR-40/F-19S8-TRV
- TR-40/F-19S8-TRCP
- TR-60/F-24S8-TRV
- TR-60/F-24S8-TRCP
- TR-100/F-30S8-TRV
- TR-100/F-30S8-TRCP
- TR-140/KIT-F-36S8-TRV
- TR-140/F-36S8-TRCP





No.	Description	Quantity	Code
1	Valve 1 1/2" 6-Way (for 19" & 24")	1	RE261070ND
	Valve 2" 6-Way (for 30" & 36")	1	RE261071ND
2	Base (19" & 24")	1	RBASEUNI1
	Base (30" & 36")	1	RBASEUNI2
3	Drain Kit High Flow	1	R154696
4	Lateral 19"	1*	R301904
	Lateral 24"	1*	R302404
	Lateral 30"	1*	R303004
	Lateral 36"	1*	R303604
	Lateral Clear Pro 19"	1*	R301904CP
	Lateral Clear Pro 24"	1*	R302404CP
	Lateral Clear Pro 30"	1*	R303004CP
	Lateral Clear Pro 36"	1*	R303604CP
5	Bottom Diffuser System 19" (incl.8,10,11,12)	1	G-30-1905
	Bottom Diffuser System 24" (incl.8,10,11,12)	1	G-30-2405
	Bottom Diffuser System 30" (incl.8,10,11,12)	1	G-30-3005
	Bottom Diffuser System 36" (incl.8,10,11,12)	1	G-30-3605
	Bottom Diff. Sys.19" Clear Pro (incl.8,10,11,12)	1	G-30-1905CP
	Bottom Diff. Sys.24" Clear Pro (incl.8,10,11,12)	1	G-30-2405CP
	Bottom Diff. Sys.30" Clear Pro (incl.8,10,11,12)	1	G-30-3005CP
	Bottom Diff. Sys.36" Clear Pro (incl.8,10,11,12)	1	G-30-3605CP
6	Top Diffuser System 19" (incl.9,10,11,12)	1	G-30-1906
	Top Diffuser System 24" (incl.9,10,11,12)	1	G-30-2406
	Top Diffuser System 30" (incl.9,10,11,12)	1	G-30-3006
	Top Diffuser System 36" (incl.9,10,11,12)	1	G-30-3606
7	Air Relief Strainer	1	RTTAIR
8	Bottom Pipe and Hub Set 19"	1	G-30-1908
	Bottom Pipe and Hub Set 24"	1	G-30-2408
	Bottom Pipe and Hub Set 30"	1	G-30-3008
	Bottom Pipe and Hub Set 36"	1	G-30-3608
	Bottom Pipe and Hub Set 19" Clear Pro	1	G-30-1908CP
	Bottom Pipe and Hub Set 24" Clear Pro	1	G-30-2408CP
	Bottom Pipe and Hub Set 30" Clear Pro	1	G-30-3008CP
	Bottom Pipe and Hub Set 36" Clear Pro	1	G-30-3608CP
9	Top Pipe and Diffuser Set 19"	1	G-30-1909
	Top Pipe and Diffuser Set 24"	1	G-30-2409
	Top Pipe and Diffuser Set 30"	1	G-30-3009
	Top Pipe and Diffuser Set 36"	1	G-30-3609
10	O'Ring	2	R154492
11	External Adjusting Ring	2	RTTADR
12	Bulkhead	2	RTTBHD
13	O'Ring	1	R152501W
14	8½" Closure Dome	1	R152500
15	Adaptor Piece in brass	1	R154687
16	Manometer - Pressure Gauge (Back Connection)	1	R152046
17	Manual Plastic Air Bleed Valve	1	R154689
18	Wrench for 8½" Closure Dome	1	R154513
	Closure Kit (incl.13, 14, 15, 16 & 17)	1	G-15-4600
	Metal Wrench for bulkheads	1	RWRENCHTT

\* One filter requires 8 pieces.