

Operation

Changing colors:

Turn the lamps OFF and quickly back ON (0-3 seconds).

Synchronizing multiple lamps:

1. All lamps need to be connected to the same transformer.
2. Turn the lamps OFF and back ON within 4-13 seconds.
3. All the lamps back to first program (blue).

Memorizing the last color:

Select the desired color, turn OFF the lamps more than 14 seconds, the chosen color has now been memorized.

13 Color Programs (For RGB Remote Control)

Suit for 2-3 lamps in one pool, if install more than 3pcs lamps, pls choose ON/OFF type.

No.1 ON	No.2 OFF
No.3 Blue	No.4 Red
No.5 Green	No.6 Red/Blue
No.7 Blue/Green	No.8 Red/Green
No.9 White	No.10 Red-Red/Grn-Grn
No.11 Grn-Grn/Blu-Blue	No.12 Red-Red/Blu-Blue
No.13 Cycle Red-Grn-Blu, Speed from fast to low.	
No.14 Grn-Red/Blu-Blue-Red-White-Blu/Grn-Red/Grn	
No.15 Gradual change of all colors.	



ACQUA SOURCE S.A.

Manufacturer of swimming pool and fountain products

15 Souri str., 121 31 Peristeri, Athens, Greece Tel. & Fax: +30 210 5721058, +30 210 5771863, +30 210 5774345 E-mail: info@acquasource.gr

www.acquasource.gr

ACQUA
SOURCE SA

WPLD-4R

Wall Mounted Lamp

Installation Instruction



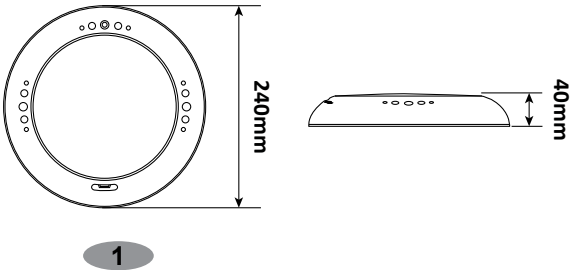
IP68 RoHS



**PLEASE READ THE FOLLOWING CAREFULLY AND
KEEP THIS USER MANUAL SAVE FOR FUTURE REFERENCE**

	ITEM NO.	Voltage	Power	Color	Lumens	LED Type	LED Qty	Control
	WPLD-4R351-PBWW	AC12V	25W	Warm White 3000K	2500lm	SMD2835	351pcs	/
	WPLD-4R351-PBCW	AC12V	25W	Cool White 6400K	2750lm	SMD2835	351pcs	/
	WPLD-4R351-PBB	AC12V	25W	Blue	1250lm	SMD2835	351pcs	/
	WPLD-4R351-PBM	AC12V	25W	RGB	1370lm	SMD2835	351pcs	Remote

DIMENSION



INSTALLATION

1. Input voltage is AC12V. The lamps must be connected with transformer.
2. The junction box is located at least 1200mm from the edge of the pool.

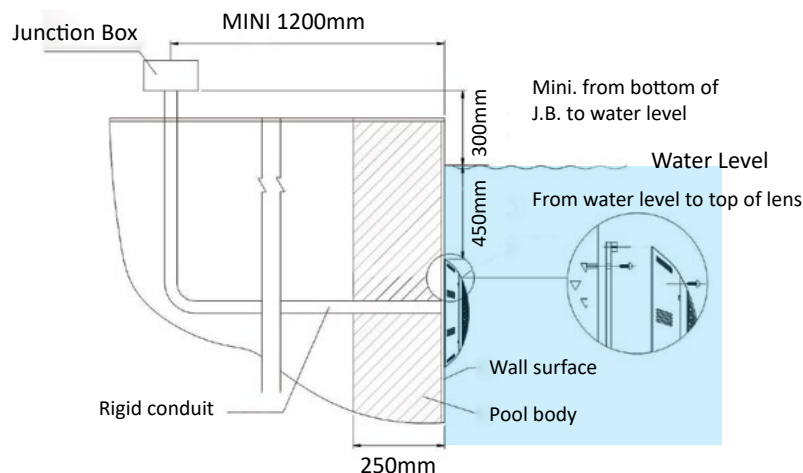
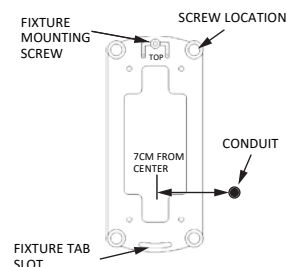
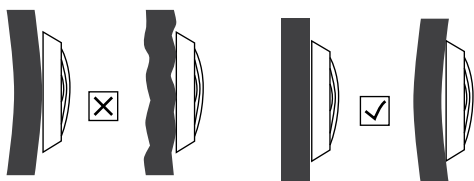


Figure 1

3. The mounting bracket must be properly installed so that the top edge of the light's lens is at least 450mm below the water level in the pool. see Figure 1.

4. Make sure the surface of pool wall is flat.
Fix the bracket with 4pcs screws.



5. If the cable connection is done underwater, the connection part must be **waterproof protected** (use waterproof cable gland or fill with epoxy glue). Otherwise, the water will come in the lamp through the wires.



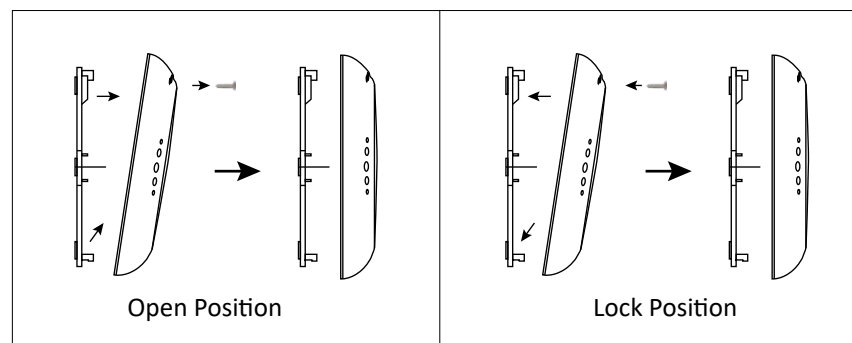
6. Connect all wires to the corresponding circuit wires in the junction box and feed epoxy.

7. Before operating the light for more than 10 seconds fill pool until the light is completely submerged in water.

8. There are 3 wires for RGB with remote control.
Connecting the signal wire out of water, enhancing the ability of signal receiving.



9. It is easy to replace the lamp.



RGB Working Mode

15 Color Programs(For RGB ON/OFF)

No.1 Blue	No.2 Red	No.3 Green	No.4 Red/Blue
No.5 Blue/Green	No.6 Red/Green	No.7 White	No.8 Red-Red/Grn-Grn
No.9 Grn-Grn/Blu-Blue	No.10 Red-Red/Blu-Blue	No.11 Cycle Red-Grn-Blu,Speed from fast to low.	
No.12 Same as program 11, the speed is slower.		No.13 Grn-Red/Blu-Blu-Red-White-Blu/Grn-Red/Grn	
No.14 Gradual change of all colors.		No.15 Gradual change of Red-Grn-Blu.	