

15 Color Programs(Only for RGB lamps)

- 1 Fixed Blue
- 2 Fixed Red
- 3 Fixed Green
- 4 Fixed Red/Blue
- 5 Fixed Blue/Green
- 6 Fixed Red/Green
- 7 Fixed White
- 8 Cycle Red-Red/Green-Green
- 9 Cycle Green-Green/Blue-Blue
- 10 Cycle Red-Red/Blue-Blue
- 11 Cycle Red-Green-Blue,Speed from fast to low.
- 12 Same as program 11, the speed is slower.
- 13 Cycle Green-Red/Blue-Blue-Red-White-Blue/Green-Red/Green
- 14 Cycle gradual change of all colors.
- 15 Cycle gradual change of Red-Green-Blue.

Operation

Changing colors:

Turn the lamps OFF and quickly back ON (0-3 seconds)

Synchronizing multiple lamps:

1. All lamps need to be connected to the same transformer.
2. Turn the lamps OFF and back ON within 5-30 seconds.
3. All the lamps back to first program (blue)

Memorizing the last color:

Select the desired color, turn OFF the lamps more than 34 seconds, the chosen color has now been memorized.



WPLD-9R

1.5 Inch Pipe Pool Light Installation Instruction



**PLEASE READ THE FOLLOWING CAREFULLY AND
KEEP THIS USER MANUAL SAVE FOR FUTURE REFERENCE**

	ITEM NO.	Voltage	Power	Color	Lumens	LED Type	LED Qty	Cotrol
	WPLD-9R135-15WW	AC12V	8W	Warm White 3000K	800lm	SMD2835	135pcs	/
	WPLD-9R135-15CW	AC12V	8W	White 6400K	880lm	SMD2835	135pcs	/
	WPLD-9R135-15B	AC12V	8W	Blue	180lm	SMD2835	135pcs	/
	WPLD-9R135-15M	AC12V	8W	RGB	440lm	SMD2835	135pcs	ON/OFF

IP68    **RoHS**

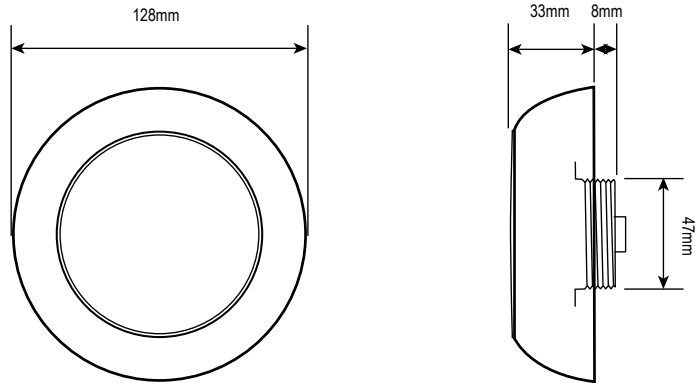
ACQUA SOURCE S.A.

Manufacturer of swimming pool and fountain products

15 Souri str., 121 31 Peristeri, Athens, Greece Tel. & Fax: +30 210 5721058, +30 210 5771863, +30 210 5774345 E-mail: info@acquasource.gr

www.acquasource.gr

DIMENSION



INSTALLATION

1. Input voltage is AC12V. The lamps must be connected with transformer.
2. The junction box is located at least 1200mm from the edge of the pool. The light's lens is at least 450mm below the water level in the pool.



3. If the cable connection is done underwater, the connection part must be **waterproof protected** (use waterproof cable gland or fill with epoxy glue). Otherwise, the water will come in the lamp through the wires.



4. Connect all wires to the corresponding circuit wires in the junction box and feed epoxy.

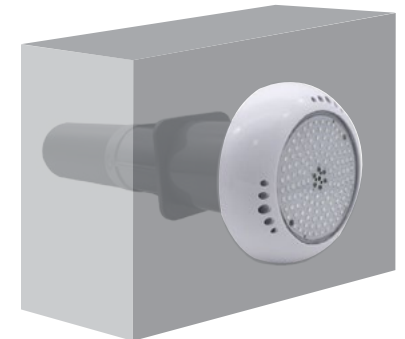
5. Before operating the light for more than 10 seconds fill pool until the light is completely submerged in water.

Liner/Fiberglass Pool



Fiberglass

Concrete Pool



Concrete